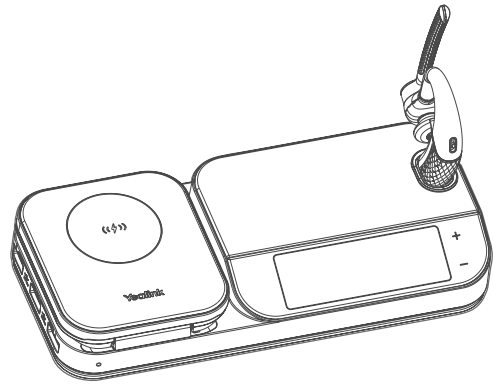


Bluetooth Headset

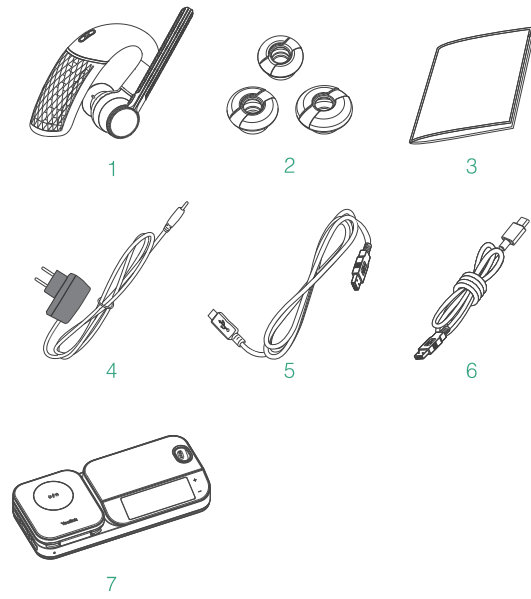
BH71 Workstation
BH71 Workstation Pro



QUICK START GUIDE

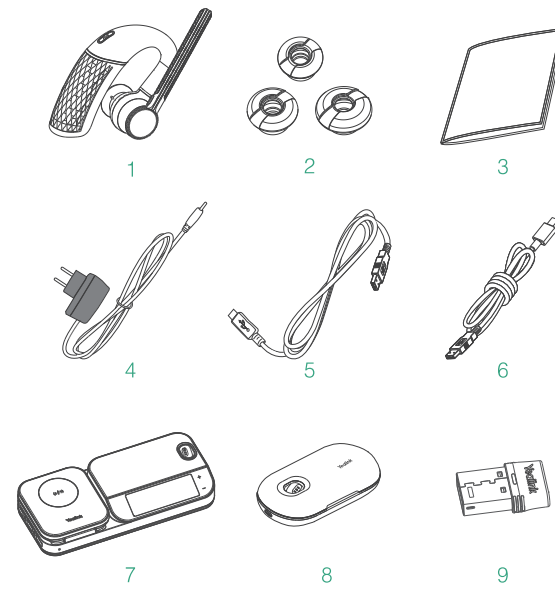
Yealink

1 BH71 Workstation Package List



- 1 BHM711 Headset
- 2 Eartips (S, M, L / M is pre-installed)
- 3 Quick Start Guide
- 4 Power Adapter
- 5 USB 2.0 Cable (Micro USB to Type-A)
- 6 USB 3.0 Cable (Type-C to Type-A)
- 7 BHB710 Station

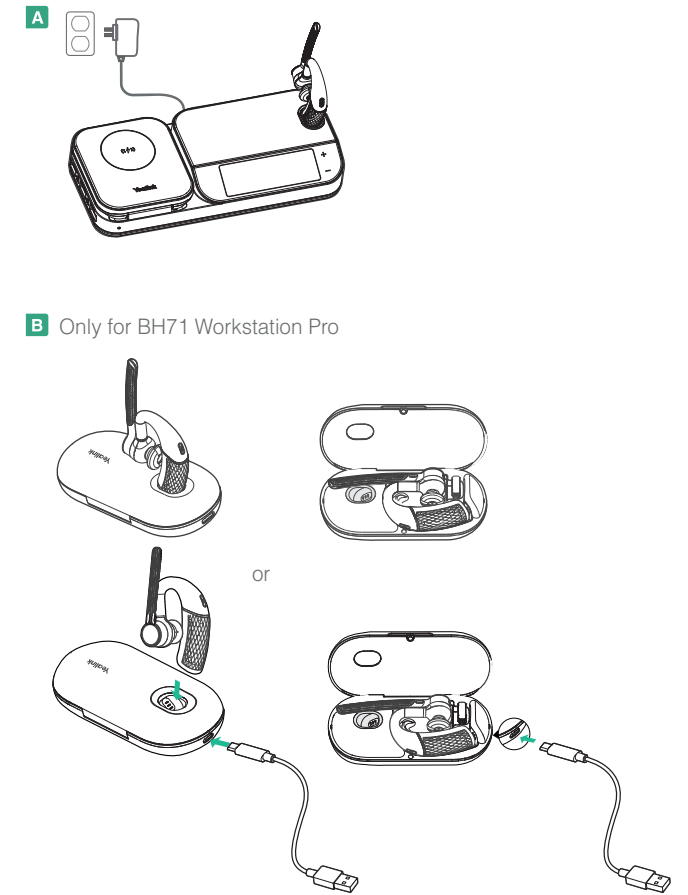
1 BH71 Workstation Pro Package List



- 1 BHM711 Headset
- 2 Eartips (S, M, L / M is pre-installed)
- 3 Quick Start Guide
- 4 Power Adapter
- 5 USB 2.0 Cable (Micro USB to Type-A)
- 6 USB 3.0 Cable (Type-C to Type-A)
- 7 BHB710 Station
- 8 BHC71P Charging Case
- 9 BT51A Dongle

2 Charge Headset

It takes approximately 90 minutes to fully charge the headset.



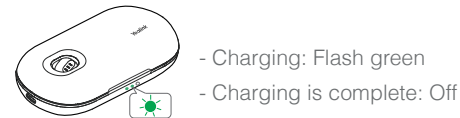
Note: Some third-party accessories may be incompatible with the headset, so we strongly recommend that you use Yealink accessories only.

Safety Guide

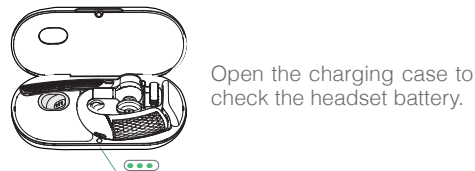
1. Do not disassemble the product by yourself or bring it near fire and water to avoid short circuit leakage or damage to the product.
2. Do not use the product in high temperature, humidity, and corrosive environment to avoid damaging the circuit and causing failure to charge or other failures.
3. Do not expose the product to corrosive liquids. Otherwise, it will cause severe damage.
4. Do not disassemble or re-equip the product for any reason to avoid secondary failure and burnout.
5. Do not place the product in an environment below -10°C or above 60°C.
6. Do not knock, throw or shake the product because rough methods will damage the internal circuit board structure.

If your headset needs warranty service, the process is quick and easy. Please go to <https://ticket.yealink.com/page/headset/warranty-service.html> and submit RMA Claim to Yealink.

3 LED Indicator

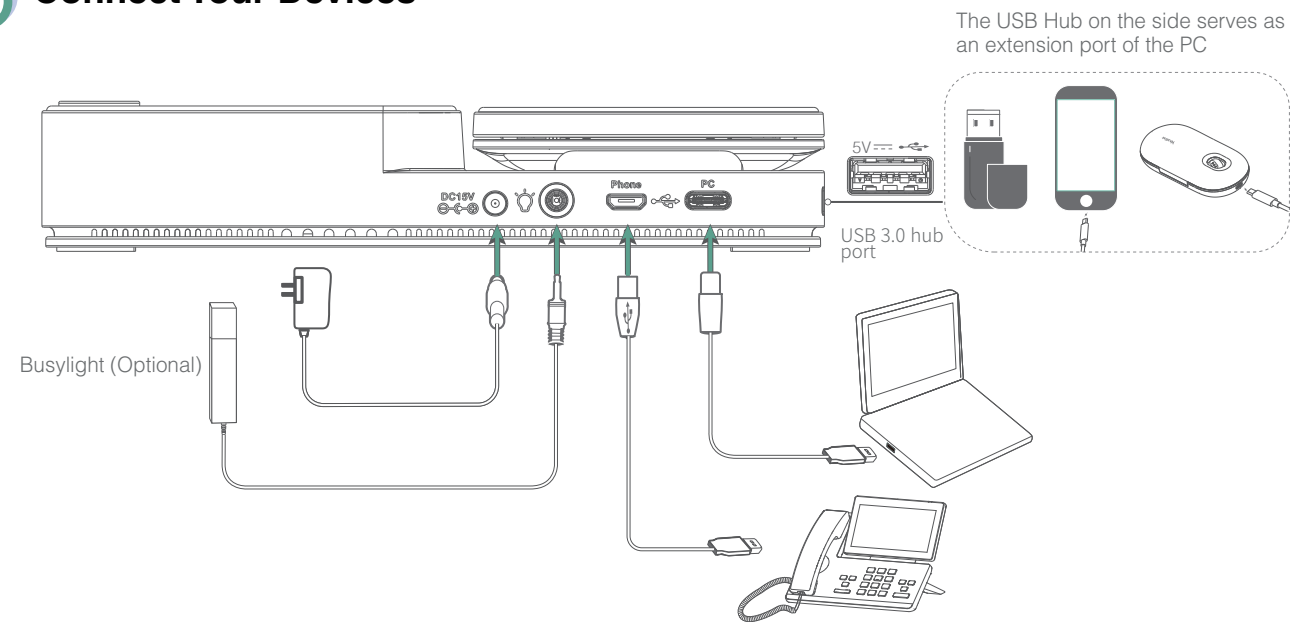


Check Battery Level

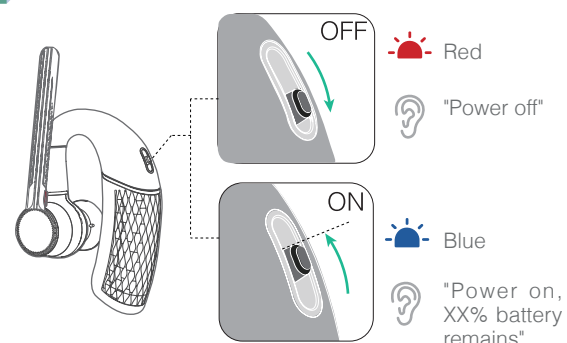


- Note:**
- When the headset is not in the case and undock to the case, the LED indicator indicates the remaining power of the case.
 - When the headset is in the case or dock to the case, the LED indicator indicates the remaining power of the headset.

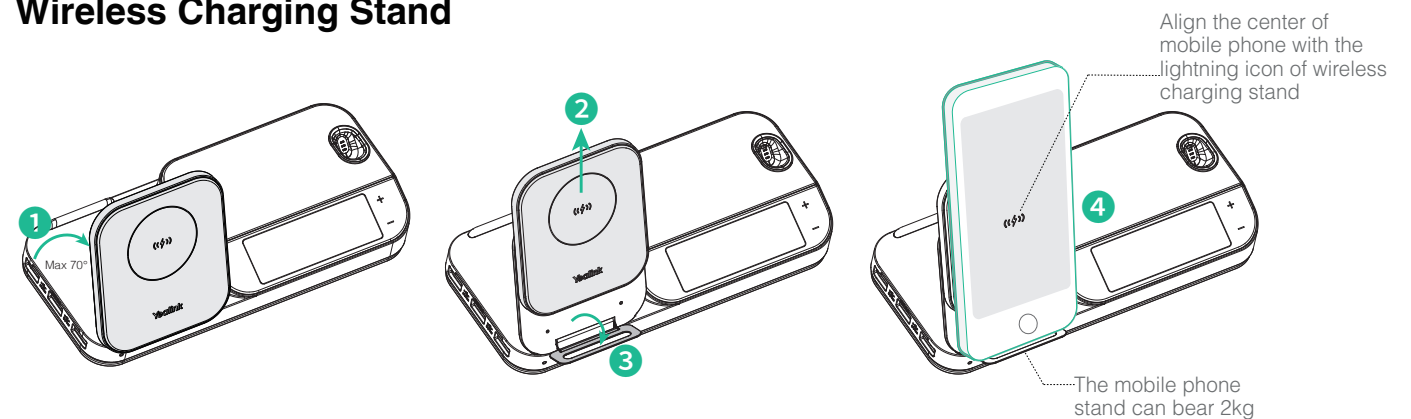
5 Connect Your Devices



4 Power on/off



6 Wireless Charging Stand



NEED MORE HELP?



Technical support
<https://ticket.yealink.com>



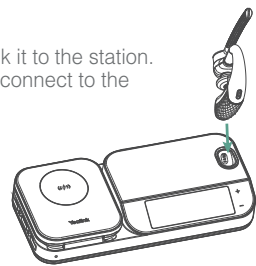
FAQ & User manual
<http://support.yealink.com>

7 Pair Your Devices

Station Connection

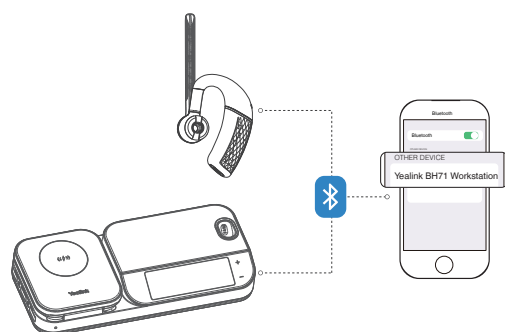
The headset is pre-paired with the station and ready for use.

Power on the headset and dock it to the station. The headset will automatically connect to the station.



Pair with mobile phone

1. Enable **Bluetooth** on your mobile phone.
2. Tap **Bluetooth** on the screen to enable Bluetooth.
3. Pair your mobile phone with the headset and station.

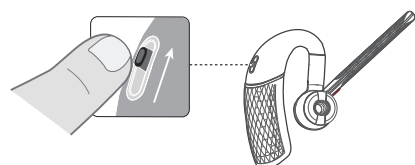


Note:

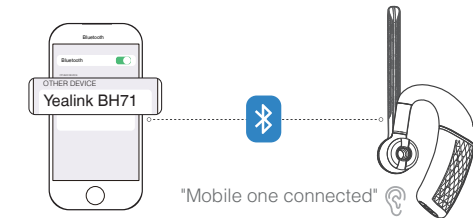
- The headset or station can connect to up to two devices simultaneously.
- After connecting your mobile phone to the headset and the station, you can switch your phone's audio to headset or hands-free for playback.

Headset Connection

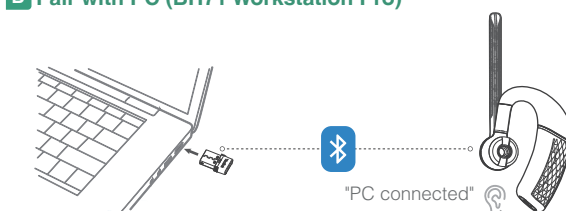
Slide and hold the switch for 3 seconds until you hear "Pairing mode", and the headset flashes red and blue.



A Pair with mobile phone



B Pair with PC (BH71 Workstation Pro)



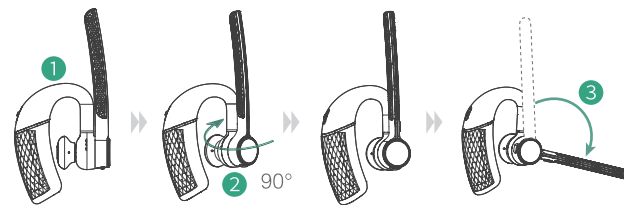
Note:

- The BT51A dongle is pre-paired with the headset and ready for use.
- The BT51A dongle can only connect to a device at a time.

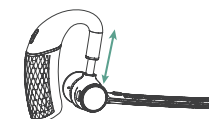
8 Fit the Headset

Right ear wearing

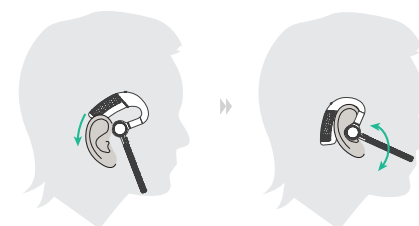
- 1 Take out the headset, as shown in figure 1. Twist the speaker to the left, and then rotate microphone boom down.



- 2 Before wearing, you can adjust the height of the speaker up or down to get the perfect fit for your ear.



- 3 Place the eartip in your ear and slide headset over and behind your ear, then press gently toward your ear. Fine-tune the headset according to your own situation.

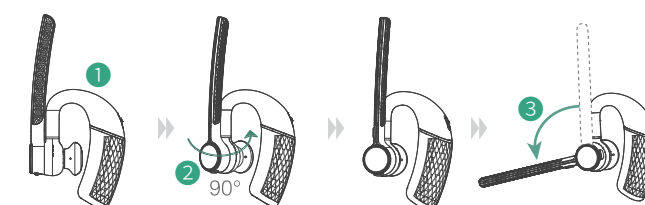


Note:

- Remove your eyeglasses before donning the headset for best fit.
- The headset comes with three sizes of ear tips. Choose one that fits you best.

Left ear wearing

- 1 Take out the headset, as shown in figure 1. Twist the speaker to the right, and then rotate microphone boom down.

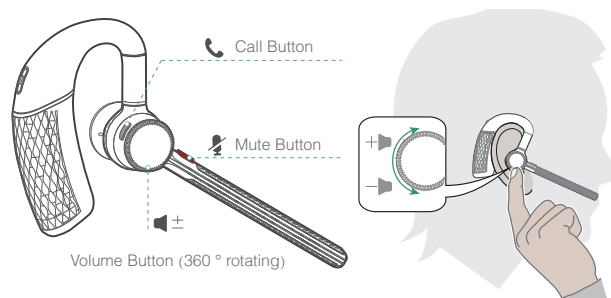


- 2 For wearing methods, please refer to steps 2 and 3 of the right ear wearing.



How-to video

9 Call Control

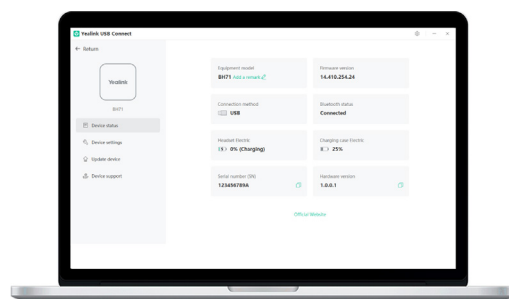


- X1 Accept
- X2 Reject
- X1 End
- X1 In the idle status, invoke the Teams client
- X2s In the idle status, activate Cortana (requires Microsoft's support)

10 Software Management

A Yealink USB Connect (PC)

To personalize, update, and manage your headset from your computer. Download: <https://www.yealink.com/product/yuc>



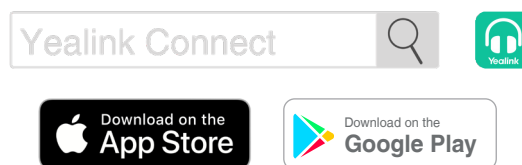
Note:

- Your device is compatible with Yealink USB Connect of version 0.35 and later.
- Please update the headset to the latest version via Yealink USB Connect (PC) before using.

B Yealink Connect (App)

Yealink Connect is a mobile application designed to manage Bluetooth headsets.

Download the Yealink Connect App from IOS App Store or Google Play.



Apple and the Apple logo are trademarks of Apple Inc.

Regulatory Notices

Operating Ambient Temperatures

- Operating temperature: 0 °C to +40 °C (+32 °F to +104 °F)
- Relative humidity: 5% to 90%, noncondensing
- Storage temperature: -30 °C to +70 °C (-22 to +158 °F)

Warranty

Our product warranty is limited only to the unit itself, when used normally in accordance with the operating instructions and the system environment. We are not liable for damage or loss resulting from the use of this product, or for any claim from a third party. We are not liable for problems with Yealink device arising from the use of this product; we are not liable for financial damages, lost profits, claims from third parties, etc., arising from the use of this product.

Explanation of the symbols

- DC symbol
- WEEE Warning symbol

To avoid the potential effects on the environment and human health as a result of the presence of hazardous substances in electrical and electronic equipment, end users of electrical and electronic equipment should understand the meaning of the crossed-out wheeled bin symbol. Do not dispose of WEEE as unsorted municipal waste and have to collect such WEEE separately.

Restriction of Hazardous Substances Directive (RoHS)

This device complies with the requirements of the EU RoHS Directive. Statements of compliance can be obtained by contacting support@yealink.com.

Safety Instructions

Save these instructions. Read these safety instructions before use!

General Requirements

- Before you install and use the device, read the safety instructions carefully and observe the situation during operation.
- During the process of storage, transportation, and operation, please always keep the device dry and clean, avoid collision and crash.
- Please attempt not to dismantle the device by yourself. In case of any discrepancy, please contact the appointed maintenance center for repair.
- Please refer to the relevant laws and statutes while using the device. Legal rights of others should be respected as well.

Environmental Requirements

- Place the device at a well-ventilated place. Do not expose the device under direct sunlight.
- Keep the device dry and free of dust.
- Do not place the device on or near any inflammable or fire-vulnerable object, such as rubber-made materials.
- Keep the device away from any heat source or bare fire, such as a candle or an electric heater.

Operating Requirements

- Do not let a child operate the device without guidance.
- Do not let a child play with the device or any accessory in case of accidental swallowing.
- Please use the accessories provided or authorized by the manufacturer only.
- The power supply of the device shall meet the requirements of the input voltage of the device. Please use the provided surge protection power socket only.
- Before plugging or unplugging any cable, make sure that your hands are completely dry.
- Do not spill liquid of any kind on the product or use the equipment near water, for example, near a bathtub, washbowl, kitchen sink, wet station or near a swimming pool.
- During a thunderstorm, stop using the device and disconnect it from the power supply. Unplug the power plug and the Asymmetric Digital Subscriber Line (ADSL) twisted pair (the radio frequency cable) to avoid lightning strike.
- If the device is left unused for a rather long time, disconnect it from the power supply and unplug the power plug.
- When there is smoke emitted from the device, or some abnormal noise or smell, disconnect the device from the power supply, and unplug the power plug immediately.
- Contact the specified maintenance center for repair.
- Do not insert any object into equipment slots that is not part of the product or auxiliary product.
- Before connecting a cable, connect the grounding cable of the device first. Do not disconnect the grounding cable until you disconnect all other cables.

Battery Requirements

- Do not immerse the battery into water, which could short-circuit and damage the battery.
- Do not expose the battery to an open flame or leave the battery where it could be subjected to extremely high temperatures, which could cause the battery to explode.
- Do power the handset off before removing the battery.
- Do not try to use the battery for the power supply of any device other than this handset.
- Do not open or mutilate the battery, released electrolyte is corrosive and may cause damage to your eyes or skin.
- Use only the rechargeable battery pack delivered with the handset or those rechargeable battery packs expressly recommended by Yealink.
- Defective or exhausted battery should never be disposed of as municipal waste. Return old battery to the battery supplier, a licensed battery dealer or a designated collection facility.

Cleaning Requirements

- Before cleaning the device, disconnect it from the power supply.
- Use a piece of soft, dry and anti-static cloth to clean the device.
- Keep the power plug clean and dry.

Troubleshooting

The unit cannot supply power to Yealink device.

There is a bad connection with the plug.

1. Clean the plug with a dry cloth.
2. Connect it to another wall outlet.

The usage environment is out of operating temperature range.

1. Use in the operating temperature range.

The cable between the unit and the Yealink device is connected incorrectly.

1. Connect the cable correctly.

You cannot connect the cable properly.

1. You may have connected a wrong Yealink device.

2. Use the correct power supply.

Some dust, etc., may be in the port.

1. Clean the port.

Contact your dealer or authorized service facility for any further questions.

FCC CAUTION

This device complies with part 15 of the FCC Rules. Operation is subject to the following two conditions: (1) This device may not cause harmful interference, and (2) this device must accept any interference received, including interference that may cause undesired operation. Any changes or modifications not expressly approved by the party responsible for compliance could void the user's authority to operate the equipment.

Note: This equipment has been tested and found to comply with the limits for a Class B digital device, pursuant to part 15 of the FCC Rules. These limits are designed to provide reasonable protection against harmful interference in a residential installation. This equipment generates, uses and can radiate radio frequency energy and, if not installed and used in accordance with the instructions, may cause harmful interference to radio communications. However, there is no guarantee that interference will not occur in a particular installation. If this equipment does cause harmful interference to radio or television reception, which can be determined by turning the equipment off and on, the user is encouraged to try to correct the interference by one or more of the following measures:

The BHB710 Station should be installed and operated with minimum distance 20cm between the radiator & your body.

—Reorient or relocate the receiving antenna.

—Increase the separation between the equipment and receiver.

—Connect the equipment into an outlet on a circuit different from that to which the receiver is connected.

—Consult the dealer or an experienced radio/TV technician for help.

The equipment complies with FCC radiation exposure limits set forth for an uncontrolled environment.

This transmitter must not be co-located or operating in conjunction with any other antenna or transmitter.

ISED WARNING

This device complies with Innovation, Science and Economic Development Canada licence-exempt RSS standards(s). Operation is subject to the following two conditions: (1) this device may not cause interference, and (2) this device must accept any interference, including interference that may cause undesired operation of the device.

Le présent appareil est conforme aux CNR d'Industrie Canada applicables aux appareils radio exempts de licence. L'exploitation est autorisée aux deux conditions suivantes : (1) l'appareil ne doit pas produire de brouillage, et (2) l'utilisateur de l'appareil doit accepter tout brouillage radioélectrique subi, même si le brouillage est susceptible d'en compromettre le fonctionnement.

This Class B digital apparatus complies with Canadian ICES-003. Cet appareil numérique de la classe B est conforme à la norme NMB-003 du Canada.

The device is compliance with RF exposure guidelines, users can obtain Canadian information on RF exposure and compliance. For BHB710 Station, the minimum distance from body to use the device is 20cm.

L'appareil est conforme aux directives d'exposition aux RF, les utilisateurs peuvent obtenir des informations canadiennes sur l'exposition aux RF et la conformité. Pour la station BHB710, la distance minimale du corps pour utiliser l'appareil est de 20 cm.

Les communications effectuées au moyen de cet appareil ne sont pas nécessairement protégées des interceptions.

EU Regulatory Information

Support Frequency Bands and Power: Bluetooth 2.4GHz<20dBm

Contact Information

YEALINK NETWORK TECHNOLOGY CO.,LTD.

No.666 Hu'an Rd. Huli District Xiamen City, Fujian, P.R. China

YEALINK (EUROPE) NETWORK TECHNOLOGY B.V.

Strawinskylaan 3127, Atrium Building, 8th floor, 1077ZX Amsterdam, The Netherlands

YEALINK (USA) NETWORK TECHNOLOGY CO., LTD.

999 Peachtree Street Suite 2300, Fulton, Atlanta, GA, 30309, USA

Made in China

430104002185

Model: BHM711

Input: 5V = 0.2A

FCC ID: T2C-BHM711

IC: 10741A-BHM711

20

FC CE UK CA

Bluetooth Headset

Bluetooth Headset

Bluetooth Headset

Bluetooth Headset

Bluetooth Headset

Bluetooth Headset

Bluetooth Headset

Bluetooth Headset

Bluetooth Headset

Bluetooth Headset

Bluetooth Headset

Bluetooth Headset

Bluetooth Headset