

EPOS SDW 30/60 Battery Replacement

Disassembling the rechargeable battery pack

Required material

- new Battery pack for SDW 30 HS | SDW 60 HS – ID No. AHB732038TPCT
- Tool such as a small plastic rod and paper clip for SDW 60 HS

Opening the battery compartment



CAUTION!

Damage to the product due to improper handling!

The wires can be kinked or damaged if you open the battery compartment too jerkily.

- > Carefully open the battery compartment.
-

SDW 30 HS



- > Slide one finger into the small recess on the side support.

The battery compartment lifts a bit

- > Gently remove the battery compartment cover.

SDW 60 HS



- > Use a paper clip or similar tool to press the unlock button and turn the cover a bit.

EPOS SDW 30/60 Battery Replacement

Removing the rechargeable battery

SDW 30 HS



SDW 60 HS



- > Use a plastic tool (e.g. small plastic lifting rod) to lift the rechargeable battery. Please note, that the battery is attached with an adhesive.

SDW 30 HS



SDW 60 HS



- > Remove the rechargeable battery.
- > Carefully loosen the connector plug.

EPOS SDW 30/60 Battery Replacement

Assembling the new battery pack

SDW 30 HS



SDW 60 HS



- > Rotate the battery so that the marking signs are visible at the top.
- > Insert the connector plug of the new rechargeable battery into the connection socket. Observe correct orientation of the connector plug.
- > Press on the plastic parts to securely lock the connector plug.

EPOS SDW 30/60 Battery Replacement

SDW 30 HS



SDW 60 HS



- > Insert the battery and assure that the marking signs are visible at the top. Place the battery centered to secure an air gap around it.
- > Make sure that the wires are aligned and not crossing over each other. Gently press down the three wires and the battery.
- > Slide in the battery compartment cover.

SDW 30 HS



SDW 60 HS

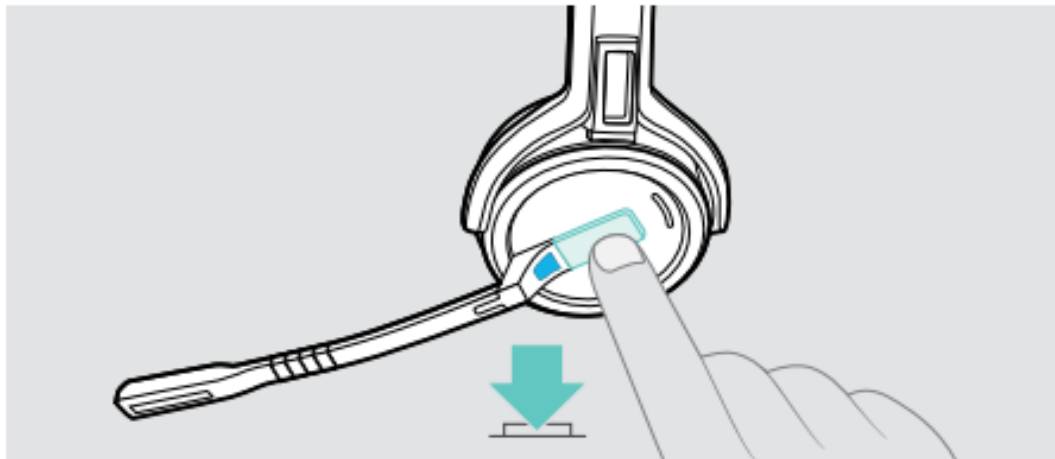


- > Start attaching the lower side (as shown) and then push the other side down. Finally, push the sides into place.
- > Close the battery compartment and turn the lid clockwise. You hear a click.

EPOS SDW 30/60 Battery Replacement

Testing the battery and final adjustments

- > Test the function of the headset: Press the Hook button to switch on the headset. The LED lights up blue.



- > Charge the battery for at least 20 minutes before using the headset. See User Guide for further information.
- > Switch off the headset before sending it to the customer. Press and hold the Hook button for 5 seconds. The headset switches off. The Headset LED flashes red 3 times and turns off.

