

EPOS/Sennheiser DECT headset to Mitel 6800 Howto

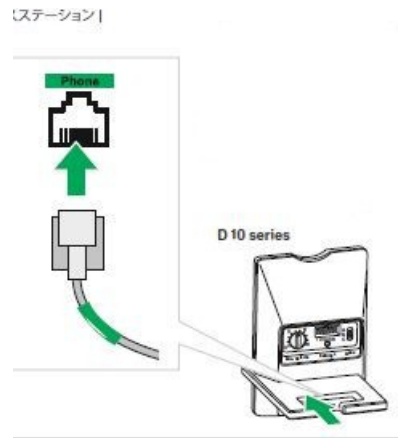
As well as the D10 Phone, SDW or DW Pro cordless headset and the Mitel telephone you will also need a Sennheiser EHS cable.



CEHS-DHSG Cable (Part# 1000751).



1. Connect the CEHS-DHSG cable to the back of the headset base/charger



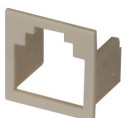
* Note the cable end with the coloured tape needs to be plugged into the headset base.

2. Plug the other end of the CEHS-DHSG cable into Mitel phone headset socket.

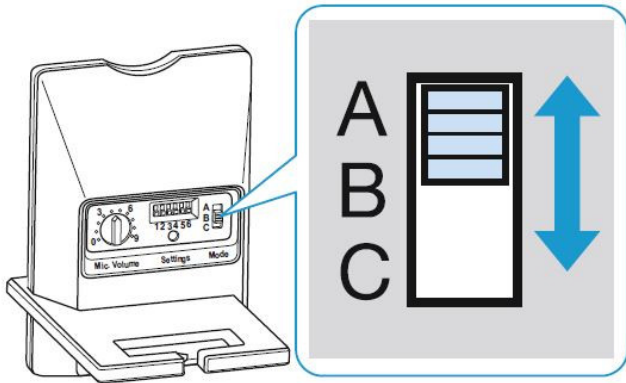


Headset Socket

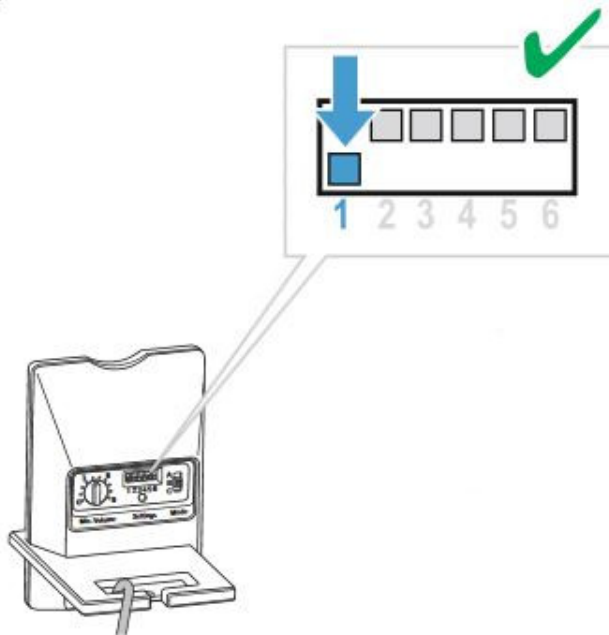
** Note you may have to remove the plastic reducer on the telephone headset socket, or the cable will not fit.



3. Set ABC audio termination selector found on Sennheiser D10 base to A





4. Configure D10 phone headset base for DHSG mode





Established 1981

5. Enable DHSG mode on Mitel telephone.

1. Press  on the phone to enter the Options List.
 2. Select **Preferences**.
 3. Select **Set Audio**.
 4. Select **DHSG**.
 5. Select the DHSG is OFF or DHSG is ON option. Default is DHSG is OFF.
 6. Press the  key or select **▶Set** to save your selection.
7. Then press the up arrow to go back to 'Audio Mode' and select
8. Scroll and Select 'Headset/Speaker'
 9. Press the > key to set
10. Reset Telephone to enable DHSG mode

That's it! The headset should now be able to make and receive calls using the EHS functionality.

Echo During Call

If you find you are experiencing issues with echo that usually indicates that the headset Mic level is too high. You will find a Mic level adjuster on the wireless charging dock that allows you to adjust your outgoing Mic level.

Spotting Difference DHSG and Standard Cable

The standard audio only headset cable can easily be confused with the correct DHSG cable that supports data and audio. If the wrong cable is used the Mitel telephone and headset will not communicate with each other, the result is you will only have audio with no remote answer feature. If you are finding you don't have to remove the plastic insert on the Mitel telephone headset socket then you likely have the wrong cable.

Wrong Plug



RJ9 (4 pin Standard audio only)

Correct Plug



RJ12 (Larger 6 pin DHSG)

Connect 2 x Wireless Headset Mitel 6865i

Parts List

2 x Wireless Headset

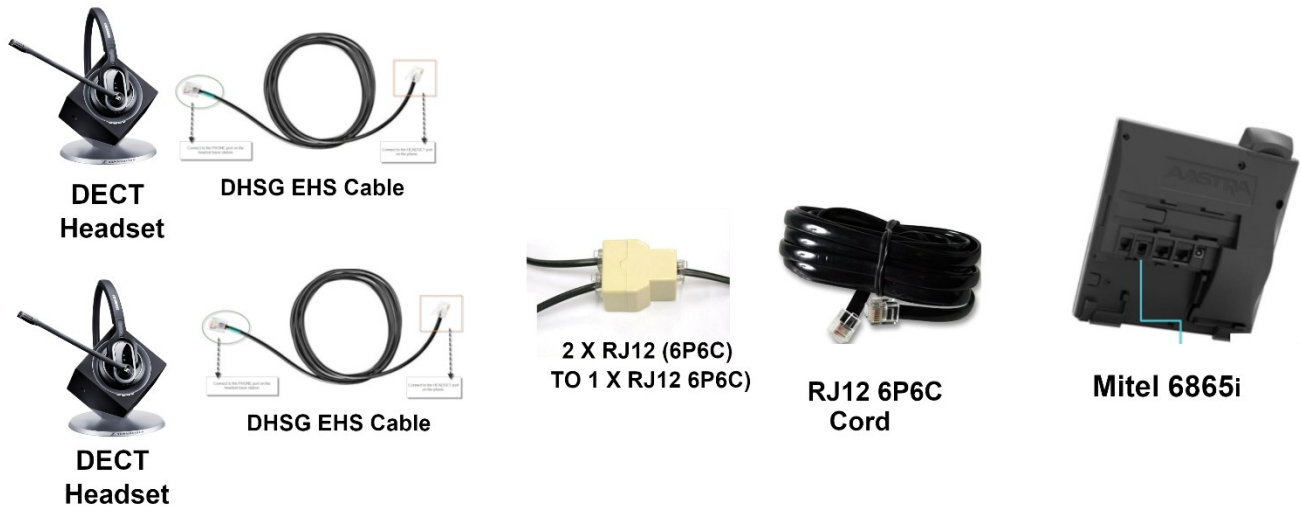
2 x DHSG EHS Cable

1 x RJ12 (6P6C) Female to 2 x RJ12 (6P6C) Female Adaptor (Splitter)

1 x RJ12 (6P6C) Male to RJ12 (6P6C) Male Cable



* RJ12 to RJ9 Adaptor has to be removed from the headset socket of the Mitel 6865i



Things to note:

1. Only 1 headset should have DHSG enabled, or it may create protocol conflicts.
2. The RJ9 insert on the Mitel 6865i must be removed or the RJ12 cable won't fit.

WARNING Only configure 1 x D10/DW Phone headset with EHS mode enabled.