

Jabra Pro 920



User manual

CONTENTS

- 1. WELCOME 4**
- 2. PRODUCT OVERVIEW 5**
 - 2.1 PACKAGE CONTENTS 5
 - 2.2 HEADSET OVERVIEW 6
 - 2.3 HEADSET ATTACHMENTS 7
 - 2.4 BASE OVERVIEW 8
 - 2.5 OPTIONAL ACCESSORIES 9
- 3. CONNECTING TO A DESK PHONE 10**
 - 3.1 FOLDABLE BASE STAND 10
 - 3.2 CONNECT TO DESK PHONE 11
 - 3.3 CONNECT POWER SUPPLY TO BASE 13
 - 3.4 DOCK THE HEADSET 13
- 4. CONFIGURING THE DESK PHONE AUDIO 14**
 - 4.1 SET A CLEAR DIAL TONE 14
 - 4.2 SET THE MICROPHONE VOLUME 14
- 5. JABRA PRO 920 FEATURES 15**
 - 5.1 HEADSET MULTI-FUNCTION BUTTON 15
 - 5.2 HEADSET SPEAKER VOLUME BUTTONS 15
 - 5.3 HEADSET MUTE BUTTON 15
 - 5.4 HEADSET LED INDICATOR 16
 - 5.5 HEADSET AUDIO INDICATORS 16
 - 5.6 BASE VISUAL INDICATORS 17
- 6. CALL MANAGEMENT 18**
 - 6.1 MAKING CALLS, ANSWERING CALLS AND ENDING CALLS 18
 - 6.2 SWITCHING BETWEEN PHONE AND HEADSET 18
 - 6.3 CONFERENCE CALL WITH MULTIPLE HEADSETS 18

7.	ADVANCED JABRA PRO 920 FEATURES	19
7.1	SAFETONE™ AUDIO PROTECTION	19
7.2	WIRELESS RANGE.....	19
7.3	POWER MANAGEMENT	19
7.4	REMOTE CALL CONTROL	19
7.5	HOW TO CHANGE THE ADVANCED SETTINGS.....	20
7.6	HOW TO RESET ADVANCED SETTINGS.....	21
7.7	COPY SETTINGS TO MULTIPLE JABRA PRO 920 BASES	22
7.8	FORCED PAIRING (PAIRING A NEW PRIMARY HEADSET)	22
7.9	UPDATE FIRMWARE AND HEADSET SETTINGS (SERVICE CABLE).....	22
8.	SUPPORT.....	23
8.1	FAQS AND TROUBLESHOOTING.....	23
9.	TECHNICAL SPECIFICATIONS	24
9.1	JABRA PRO 920 HEADSET	24
9.2	HEADSET BATTERY	24
9.3	MATERIALS AND ALLERGIES	25
9.4	JABRA PRO 920 BASE	25
9.5	PRODUCT DISPOSAL	25
9.6	CERTIFICATIONS AND SAFETY APPROVALS.....	26

1. WELCOME

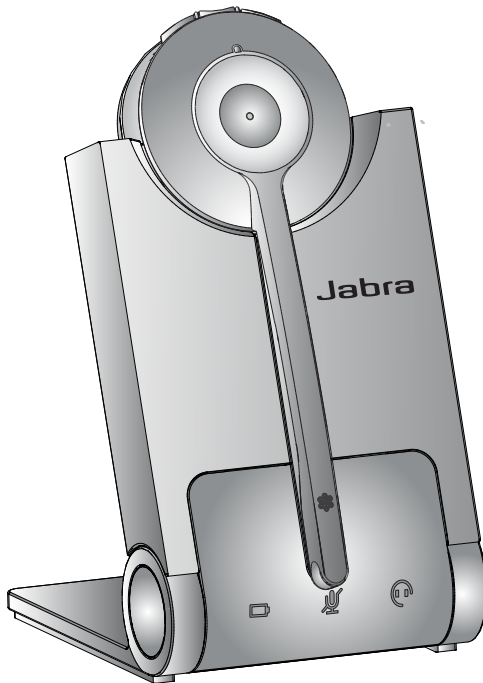
Congratulations on purchasing your new Jabra PRO 920. We are sure you will enjoy its wide range of features, and find the headset comfortable to wear and easy to use.

Jabra PRO 920 headset features

- Exceptional sound quality.
- Volume and mute controls.
- Intuitive headset multi-function button for easy call handling.
- LED and audio indicators.
- Advanced hearing protection with SafeTone™.
- Noise-cancelling microphone.
- Auto sleep mode for energy conservation.
- Headband and earhook wearing-styles (earhook not supplied in all regions).

Jabra PRO 920 base features

- Headset recharge docking cradle.
- Visual call status indicators.
- Battery indicators.
- Voice-prompted configuration.
- Port for Jabra LINK adapter and GN1000 remote handset lifter.



2. PRODUCT OVERVIEW

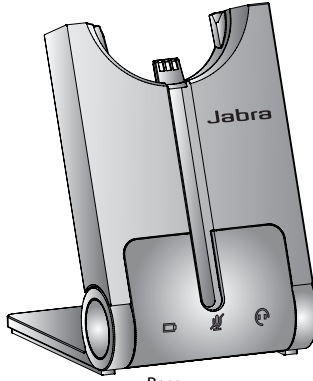
2.1 PACKAGE CONTENTS



Headset



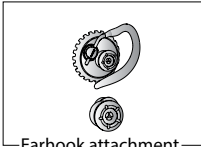
Headband attachment



Base



Power adapter



Earhook attachment
(not supplied in all regions)



Quick Start Guide

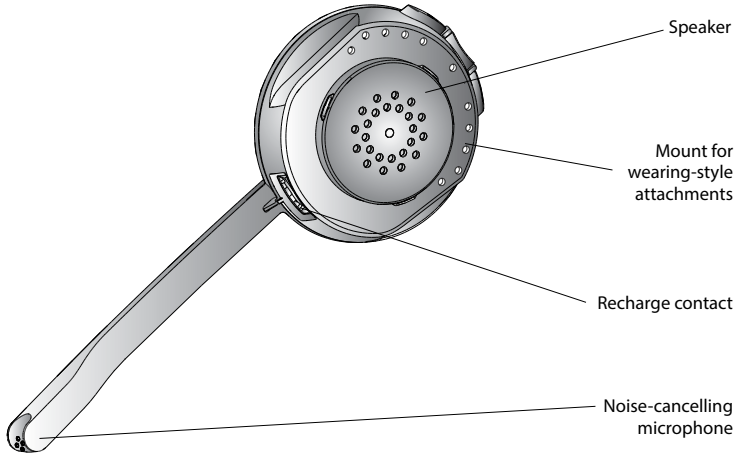
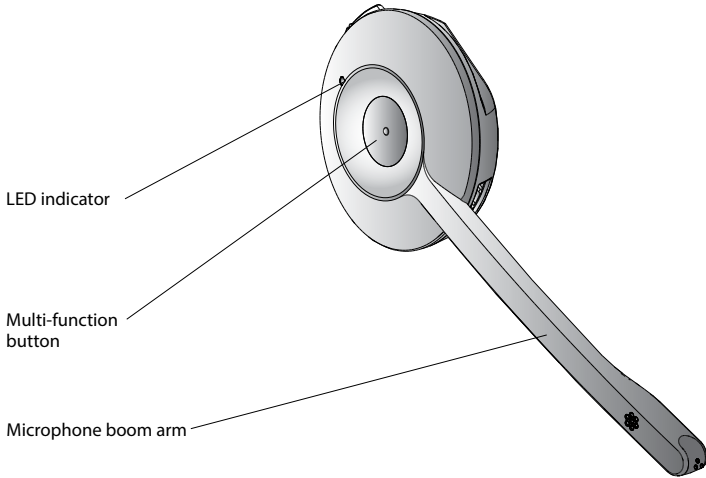
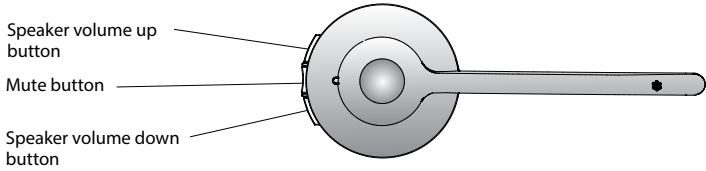


Telephone cable



Warning & Declaration
booklet

2.2 HEADSET OVERVIEW

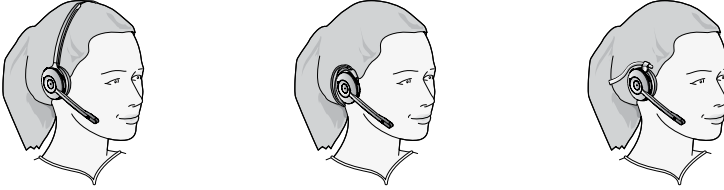


2.3 HEADSET ATTACHMENTS

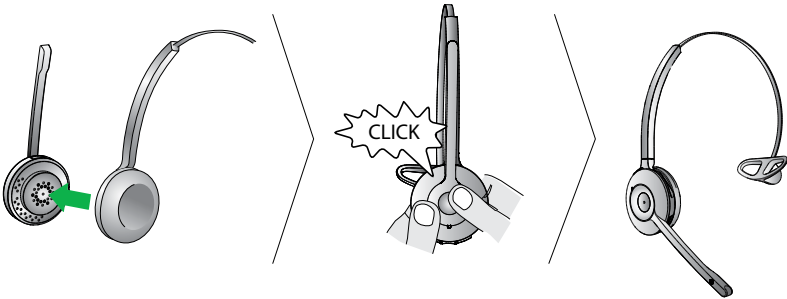
The Jabra PRO 920 headset can be worn in three different wearing-styles: headband, ear hook or neckband. The headband and earhook attachments (earhook not supplied in all regions) are included with the Jabra PRO 920. The neckband attachment can be purchased separately.

All wearing-styles are interchangeable and can be worn on either the left or right ear.

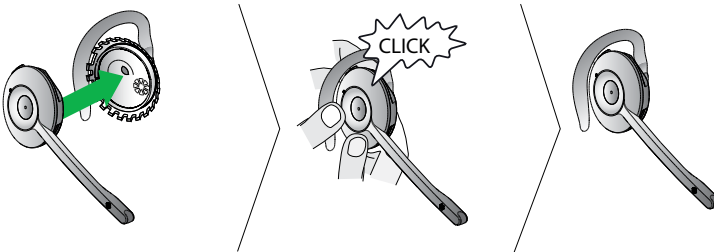
Regardless of wearing-style, position the microphone as close to the mouth as possible for maximum noise-cancelling effect.



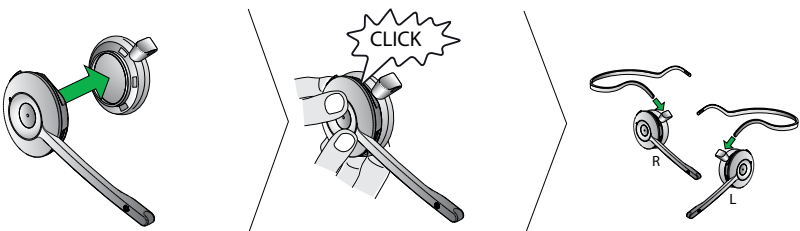
Attaching the headband



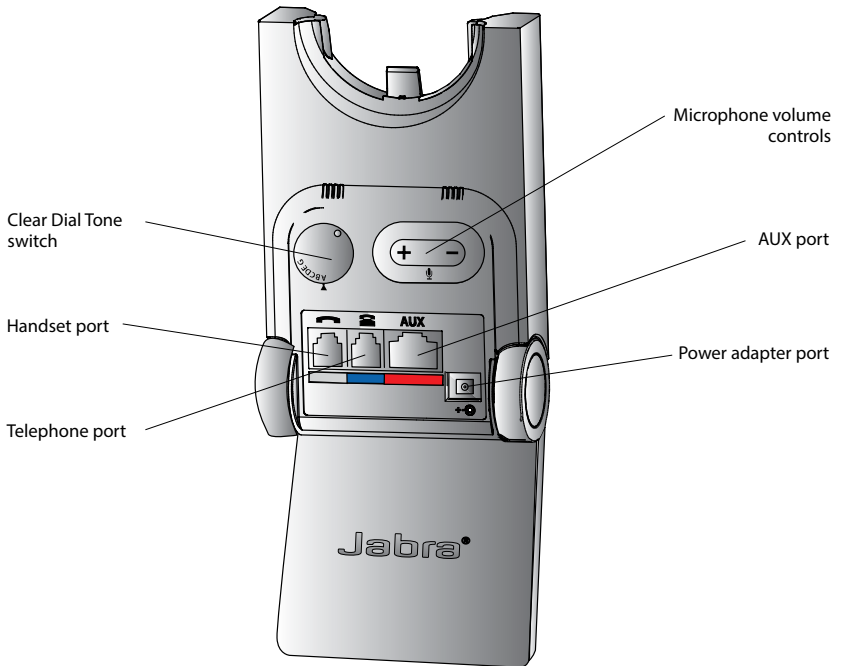
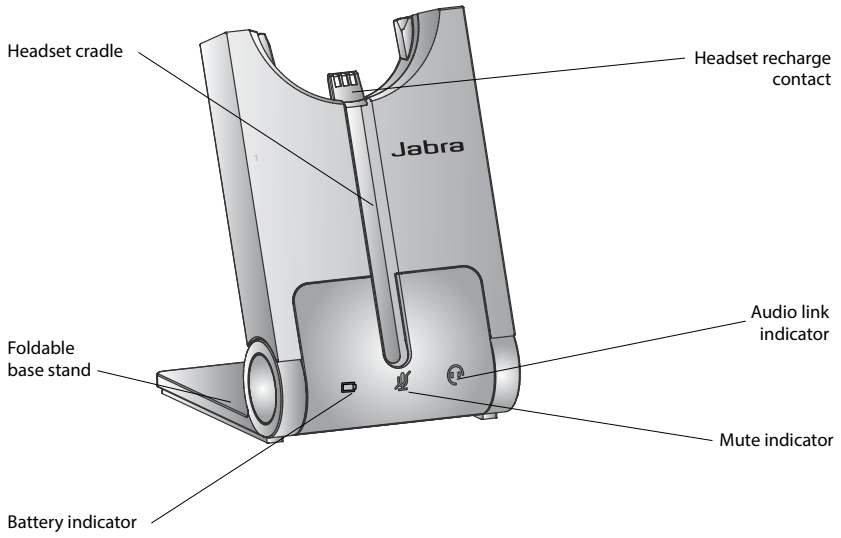
Attaching the earhook (earhook not supplied in all regions)



Attaching the neckband (optional accessory)

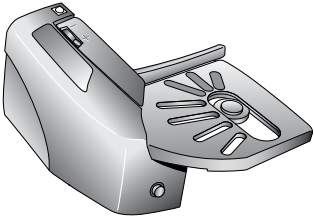


2.4 BASE OVERVIEW

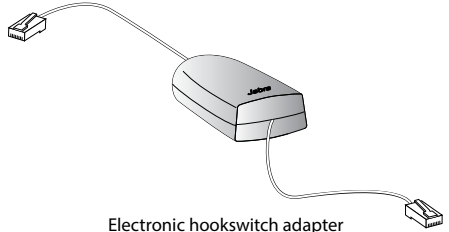


2.5 OPTIONAL ACCESSORIES

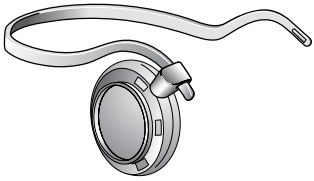
The following Jabra PRO accessories are available separately. Visit jabra.com for full accessory overview.



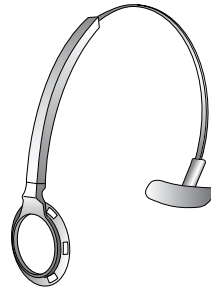
Jabra GN1000



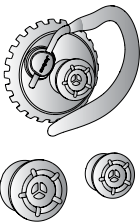
Electronic hookswitch adapter
(actual product may vary from illustration)



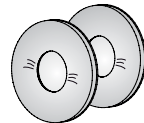
Neckband attachment



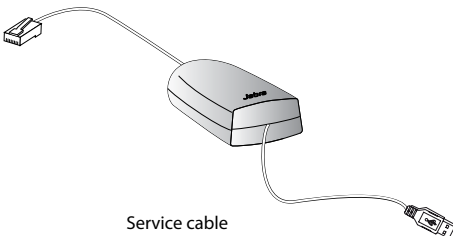
Replacement headband attachment



Replacement earhook, with earbuds



Replacement ear cushions

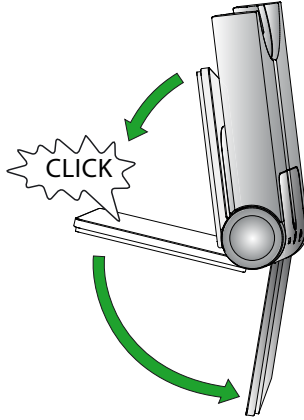


Service cable

3. CONNECTING TO A DESK PHONE

3.1 FOLDABLE BASE STAND

The Jabra PRO 920 base stand can be folded into three positions: open, closed and standing position, as illustrated.





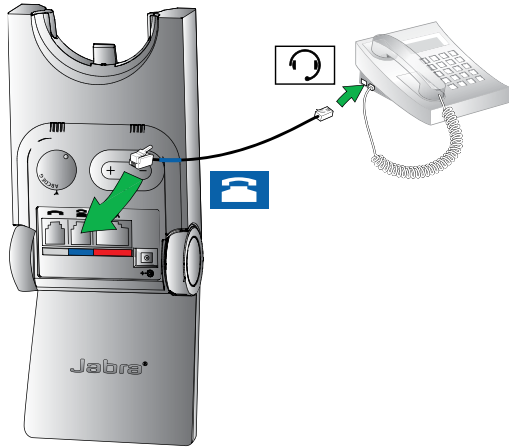
3.2 CONNECT TO DESK PHONE

OPTION 1

Desk Phone with Headset Port

This type of desk phone has a dedicated headset port (usually at the back of the phone). These phones typically have a button on the front panel for switching between handset and headset.

1. Plug the supplied telephone cable into the port marked  on the base.
2. Connect the telephone cable to the headset port  on the desk phone.



or

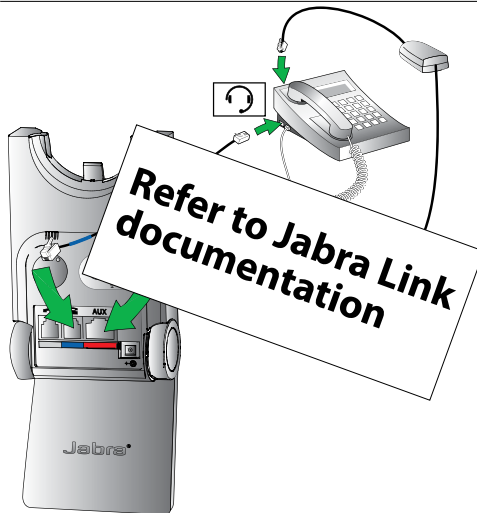
OPTION 2

Desk Phone with Jabra Link

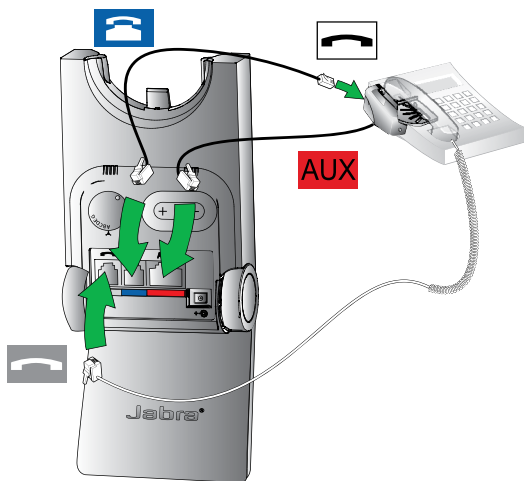
A Jabra Link adapter enables an incoming call to be answered or ended by the headset multi-function button.

Contact your local Jabra dealer to purchase a Jabra Link adapter for your specific desk phone.

1. Connect the Jabra Link adapter as shown in adapter documentation supplied with the Jabra Link. On some phones the telephone cable will also need to be connected.
2. Call your connected desk phone using another phone to enable the Jabra Link adapter. Wait 10 seconds before answering the phone.





or

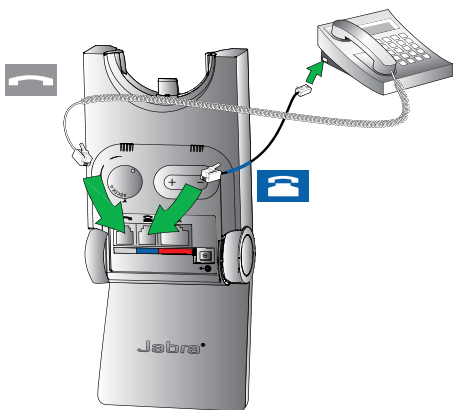
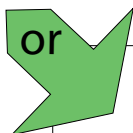
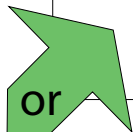


OPTION 3

Desk Phone with GN1000

The GN1000 remote handset lifter manually lifts the desk phone handset to make or answer a call. For mounting instructions refer to documentation supplied with the GN1000.



1. On the desk phone, unplug the handset cable from the phone body.
2. Connect the handset cable to the port marked  on the base.
3. Plug the supplied telephone cable into the port marked  on the base.
4. Connect the telephone cable into the handset port on the desk phone.
5. Connect the GN1000 cable into the port marked **AUX** on the base.




OPTION 4

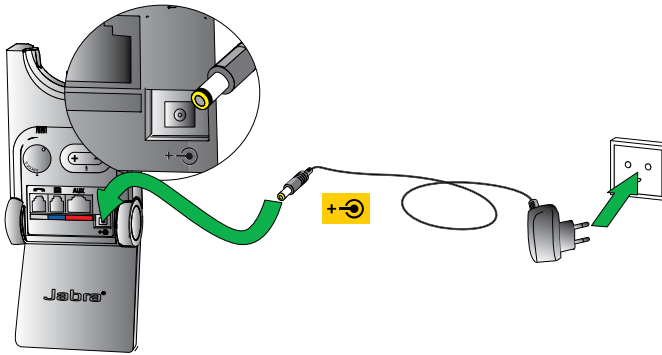
Desk Phone without Headset Port

This desk phone does not have a dedicated headset port.

1. On the desk phone, unplug the handset cable from the phone body.
2. Connect the handset cable to the port marked  on the base.
3. Plug the supplied telephone cable into the port marked  on the base.
4. Connect the telephone cable into the handset port on the desk phone.

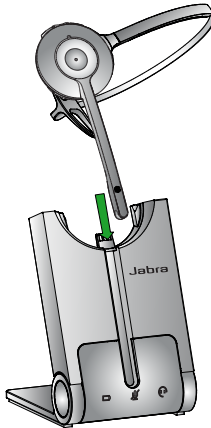
3.3 CONNECT POWER SUPPLY TO BASE


1. Plug the power adapter into the port marked  on the base.
2. Connect the power adapter to the mains power socket.



3.4 DOCK THE HEADSET

Dock the headset with the base



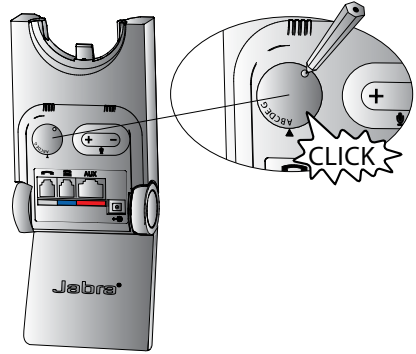
Dock the headset. When docked correctly the headset battery will begin charging, if needed. Charge for 20 minutes or until the battery indicator on the base  is steady green.

4. CONFIGURING THE DESK PHONE AUDIO

Due to the large range of desk phone brands/models available, a clear dial tone must be set before first-time use of the Jabra PRO 920. Setting the clear dial tone will enable the Jabra PRO 920 to function correctly with your specific desk phone. Additionally it is also important to set the microphone volume for optimal sound quality.

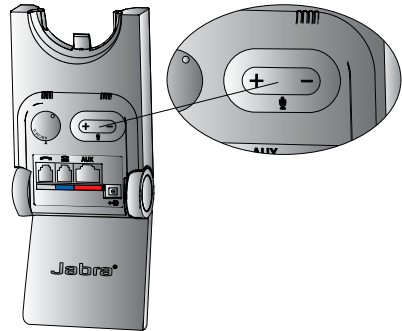
4.1 SET A CLEAR DIAL TONE

1. Put on the headset.
2. Press the headset button on the desk phone, or lift the desk phone handset.
3. Locate the clear dial tone switch on the back of the Jabra PRO 920 base, as illustrated, and while listening in the headset for a clear dial tone, rotate the switch from A to G.
4. Determine the best switch position. The dial tone should be strong, clear and undistorted.
5. When the clear dial tone is set, press the headset button on the desk phone, or return the desk phone handset to the receiver.



4.2 SET THE MICROPHONE VOLUME

1. Put on the headset.
2. Get a dial tone by pressing the headset button on the desk phone, or by lifting the desk phone handset.
3. Make a test call. Call a friend or colleague to test your speaking volume. Ensure the listener does not adjust their own volume.
4. Adjust the microphone volume using the microphone + / - volume buttons, as illustrated, if your speaking volume is too loud or too quiet for the listener.
5. When the microphone volume is set, end the call.

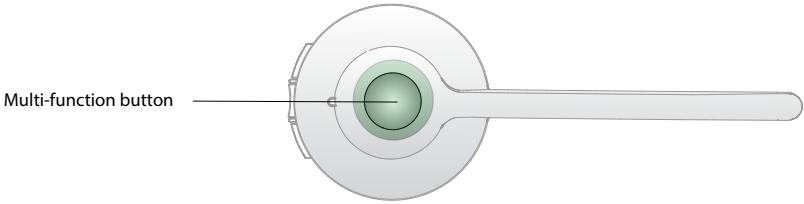


Note: To reset the microphone volume to the factory default setting, make a call and then press and hold both microphone + / - volume buttons until a tone is played, and then release the volume buttons.

5. JABRA PRO 920 FEATURES

5.1 HEADSET MULTI-FUNCTION BUTTON

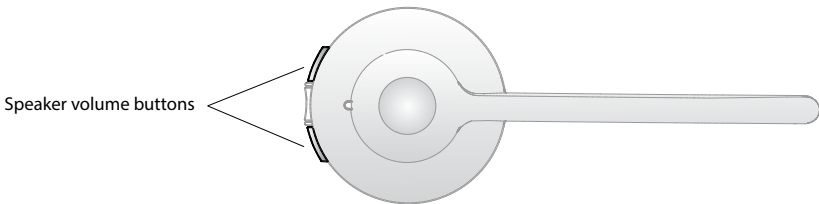
The multi-function button can answer calls and end calls using a combination of taps, double-taps or presses.



Function	Tap	Double-tap	Press (hold 1-3 seconds)
Answer incoming call	✓		
End current call	✓		
Reject incoming call		✓	
Put current call on hold, and accept incoming call (not supported by all phones)			✓
Power on	✓		
Power off			✓ (5 secs)

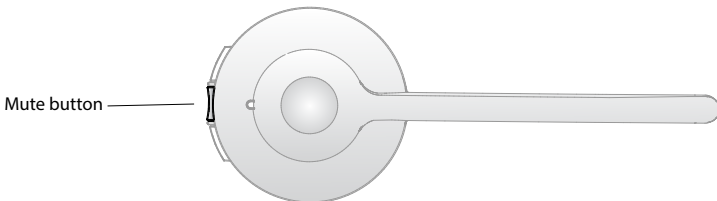
5.2 HEADSET SPEAKER VOLUME BUTTONS

The speaker volume buttons adjust the headset speaker volume.



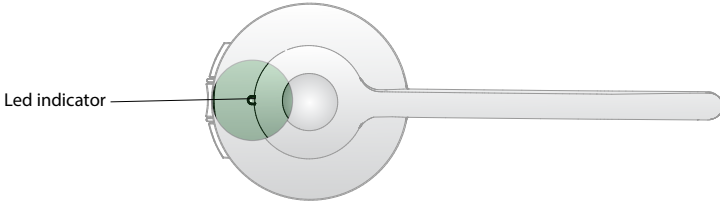
5.3 HEADSET MUTE BUTTON

The mute button mutes or un-mutes the headset microphone.



5.4 HEADSET LED INDICATOR

The LED indicator indicates call status.



Headset state	LED sample (click to view)	Headset state	LED sample (click to view)
Connected		Headset docked in base	
Not connected		Headset docked in charger	
Active call		Headset docked in unknown base	
Incoming call		Settings copying	
Power on		Settings copied	
Power off		Settings cannot be copied	
Pairing		Firmware updating	

5.5 HEADSET AUDIO INDICATORS

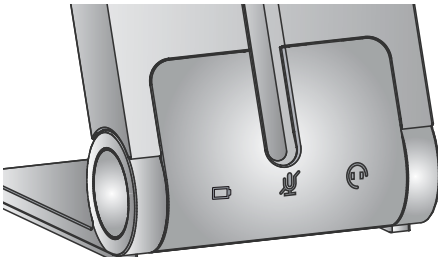
The headset plays a variety of voice announcements and audio tones to indicate headset status and actions.









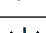
Audio tone	Audio Sample (click to listen)	Audio tone	Audio sample (click to listen)
Power on		Microphone muted	
Power off		Call ended	
Button tap		Battery low	
Button double-tap		Conference start	
Button press		Conference end	
Maximum speaker volume reached		Out of range	
Minimum speaker volume reached		Incoming call accepted	

Voice prompt	Audio Sample (click to listen)	Voice prompt	Audio sample (click to listen)
Setup		Remote call control	
Audio protection		Goodbye	
Wireless range		Factory default	
Auto sleep mode			

5.6 BASE VISUAL INDICATORS

The Jabra PRO 920 base has three LEDs to indicate battery, call status and events.



Icon	Event
	Battery charging (slow flash)
	Full battery
	Low battery
	Very low battery (fast flash)
	Sleep mode (slow flash)
	Unknown battery status
	Microphone muted
	Active audio link between headset and base
	Searching for headset

6. CALL MANAGEMENT

6.1 MAKING CALLS, ANSWERING CALLS AND ENDING CALLS

	Phone with headset port	Phone with Jabra Link, or GN1000	Phone without headset port
Make call	<ol style="list-style-type: none"> 1. Tap the headset button on the desk phone. 2. Lift headset from docking cradle, or tap the multi-function button. 3. Dial number using desk phone. 	<ol style="list-style-type: none"> 1. Lift headset from docking cradle, or tap the multi-function button. 2. Dial number using desk phone. 	<ol style="list-style-type: none"> 1. Lift headset from docking cradle, or tap the multi-function button. 2. Lift desk phone handset and set aside . 3. Dial number using desk phone.
Answer call	<ol style="list-style-type: none"> 1. Lift headset from docking cradle, or tap the multi-function button. 2. Lift desk phone handset and set aside. 	Lift headset from docking cradle, or tap the multi-function button.	<ol style="list-style-type: none"> 1. Lift headset from docking cradle, or tap the multi-function button. 2. Lift desk phone handset and set aside.
End call	Tap the headset button on the desk phone.	Dock the headset, or tap the multi-function button.	<ol style="list-style-type: none"> 1. Dock the headset, or tap the multi-function button. 2. Return desk phone handset to receiver.

6.2 SWITCHING BETWEEN PHONE AND HEADSET

Switch from desk phone to headset

1. Lift headset from docking cradle.
2. Do not return desk phone handset to receiver, as this will hang up the call.

Switch from headset to desk phone (without Jabra Link or GN1000)

1. Lift desk phone handset.
2. Dock headset, or tap the multi-function button.

Switch from headset to desk phone (with Jabra Link or GN1000)

1. Lift desk phone handset.
2. Refer to specific desk phone documentation. In some cases a button must be pressed on the desk phone, while in others the switch from handset to desk phone will be automatic.

6.3 CONFERENCE CALL WITH MULTIPLE HEADSETS

The Jabra PRO 920 is able to pair with four headsets in total for conferencing: one primary and three secondary headsets.

Connect secondary headset

1. While the primary headset is undocked and on a call, dock the secondary headset with the base hosting the call. When the headsets are successfully paired, a double-tone will sound in the primary headset.
2. Tap the multi-function button on the primary headset to accept the secondary headset. The audio is now shared between headsets.

Ending, or leaving, the conference

The primary headset user can end the conference by hanging up on the call. The call is ended for all headsets. Guests can leave the conference by tapping the multi-function on their headset, or by docking the headset with the base. The conference call is still active for the other headset(s).

7. ADVANCED JABRA PRO 920 FEATURES

7.1 SAFETONE™ AUDIO PROTECTION

SafeTone™ provides effective hearing protection against potential risks, such as acoustic shock and noise exposure. SafeTone™ consists of two components, PeakStop™ and IntelliTone™ and can be set using the Jabra PRO 920 headset (see Section 7.5).

PeakStop™ acoustic shock protection

PeakStop™ automatically suppresses sounds over 118dB(A), protecting hearing from acoustic shock.

IntelliTone™ noise exposure protection

IntelliTone™ offers protection against acoustic shock and noise exposure over 85dB(A), corresponding to up to 8 hours of daily talk.

7.2 WIRELESS RANGE

The Jabra PRO 920 supports a maximum wireless range of up to 120 meters. Physical obstructions and electromagnetic interference may shorten this range. The wireless range can be adjusted to prevent interference with other wireless devices (see Section 7.5).

Headset sound quality may deteriorate the further the headset is from the base, and may improve the closer the headset is to the base. When the headset is completely out of range, a unique tone will be played in the headset every few seconds.

If the headset is on a call when moved out of range, the audio will be lost; however the call will remain active at the base for 120 seconds. To restore audio to the call, move the headset into range of the base.

If the headset remains out of range of the base for more than an hour, the headset will power down to conserve battery.

7.3 POWER MANAGEMENT

The Jabra PRO 920 provides several built-in power management features for conserving energy.

Auto sleep mode

Auto sleep mode can be enabled using the Jabra PRO 920 base (see Section 7.5). Auto sleep mode is off by default. When enabled, the Jabra PRO 920 will automatically enter sleep mode after 8 hours of inactivity, as indicated by the battery indicator slow flashing blue. Sleep mode will end when docking or undocking the headset.

Automatic headset power off

After 60 minutes of no link between headset and base, the headset will automatically power off. To power the headset on, tap the multi-function button.

7.4 REMOTE CALL CONTROL

Remote call control (or hookswitch) is the control mechanism used to answer or end a call on a desk phone.

To enable the Jabra PRO 920 headset to answer or end calls, the desk phone will need to have a Jabra Link or a GN1000 installed.

Electronic Hookswitch (EHS)

An electronic hookswitch is a feature on some desk phones that enables calls to be answered or ended by the headset multi-function button. To use this feature an electronic hookswitch adapter (e.g. Jabra Link) needs to be connected between the desk phone and the Jabra PRO 920 base. To purchase a Jabra Link contact your supplier, or visit www.jabra.com.

GN1000

A GN1000 manually lifts the handset from the desk phone receiver to automatically place or answer a call. To purchase the Jabra GN1000 remote handset lifter contact your supplier, or visit www.jabra.com.

7.5 HOW TO CHANGE THE ADVANCED SETTINGS

Seven advanced settings can be configured using the base. Voice prompts indicate the current setting and value. The seven settings are:


- Mute reminder tone.
- Ringtone.
- Audio protection.
- Wireless range.
- Auto sleep mode.
- Remote call control.
- Wideband audio.

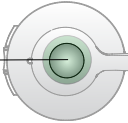
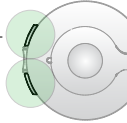




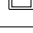











1 Start setup mode

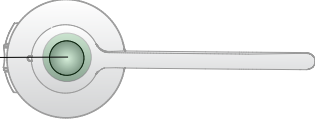
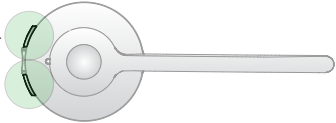













- Put on the headset.
- Simultaneously press and hold both headset volume buttons until the voice prompt says "Setup" and then release the buttons.



2 Setup mode

- The headset buttons are used to cycle through the settings and values.
- The base lights , or voice prompts are used to indicate which setting and value is currently selected.

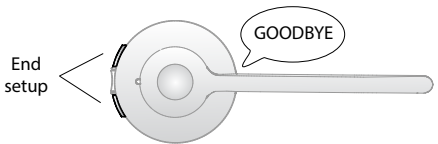
Settings		Values		
Cycle through settings		Cycle through values		
Base light	Setting	Base light	Voice Prompt	Value
 flash x1	Mute reminder tone			On
				Off
 flash x2	Ringtone			Ringtone 1 (default)
				Ringtone 2
				Ringtone 3
				Ringtone 4
				Ringtone 5
 flash x4	Audio protection			Peakstop and Intellitone
				Peakstop (default)
 flash x5	Wireless Range			Normal range (default)
				Low range
				Very low range

Settings		Values		
Cycle through settings 		Cycle through values 		
Base light	Setting	Base light	Voice Prompt	Value
 flash x6	Auto sleep mode			On
				Off (default)
				Auto detect
 flash x7	Remote call control			GN1000, RHL or none
				Jabra IQ
				DHSG
				MSH
				Siemens Optipoint
 flash x8	Wideband audio			Off
				On

3 End setup mode


When finished, simultaneously press and hold both headset volume buttons until the voice prompt says "Goodbye" and then release the buttons.

The base will restart and update the settings, indicated by the white battery icon  on the base.



7.6 HOW TO RESET ADVANCED SETTINGS

- Put on the headset.
- Simultaneously press and hold the mute button and both headset volume buttons until the voice prompt says "Factory default" and then release the buttons.

The base will restart and reset the settings, indicated by the white battery icon  on the base.



7.7 COPY SETTINGS TO MULTIPLE JABRA PRO 920 BASES

Jabra PRO 920 settings can be manually copied onto other Jabra PRO 920 bases.

1. Dock the headset in the base.
2. Press and hold the headset mute button until the headset LED flashes, and then release. When the settings have successfully copied, the headset LED will turn solid white.
3. Undock the headset and dock in the new base to copy the settings to the new base. The headset LED will flash 5 times to indicate the settings are being copied, and then will turn solid white when successfully copied to the new base.
4. To copy the settings to multiple bases, repeat step 3.
5. When finished copying settings, redock the headset with the original base (primary base), or press and hold the headset mute button until the headset LED flashes and then release.

7.8 FORCED PAIRING (PAIRING A NEW PRIMARY HEADSET)

It is possible to force the Jabra PRO 920 to pair with a new headset, even when it is currently paired with another headset.

1. Dock the new headset in the base.
2. Press the multi-function for 1-2 seconds. The headset LED will begin to flash. Forced pairing will take between 10 seconds - 2 minutes.
3. When paired successfully, the battery indicator will turn green (or red if the headset battery is low).

7.9 UPDATE FIRMWARE AND HEADSET SETTINGS (SERVICE CABLE)

It is possible to update the Jabra PRO 920 firmware and headset settings (via Jabra Direct) by connecting the Jabra PRO 920 to a PC using the service cable (optional accessory).

1. Disconnect the Jabra PRO 920 from power.
2. Connect the Jabra PRO 920 to any available USB port on the PC using the service cable (optional accessory).
3. Connect the Jabra PRO 920 to power, and wait for the headset indicator to turn green.

When connected successfully the Jabra 920 base is put into firmware update mode. It is now possible to update firmware and configure headset settings using Jabra Direct. Jabra Direct can be downloaded from www.jabra.com/direct

NOTE: To exit firmware update mode, disconnect the service cable and unplug the Jabra PRO 920 from power to reboot.

8. SUPPORT

8.1 FAQs AND TROUBLESHOOTING

Q How do I pair my headset with the Jabra PRO 920 base?

A Dock the headset with the base to initiate pairing. Pairing will occur automatically, unless the base is currently linked with a primary headset (a headset already paired with the base). Alternatively you can force pair a new primary headset, if there is currently a primary headset already paired with the base.

Q Can I pair my headset directly with a third-party DECT phone, or base?

A No. The headset can only be paired with a Jabra PRO 920 base.

Q Why doesn't my headset work with my desk phone?

A Check the following:

- Ensure the headset battery is charged. The keypad battery icon will be blinking green when charging, or solid green when charged.
- Ensure the headset is in range of the base. The range is up to 120 m, depending on environment.
- Ensure the headset and base are paired. To initiate pairing, dock the headset.

Q Why does nothing happen when I try to use my desk phone?

A Ensure the base is powered on, and check there is a dial tone. Lift the desk phone handset, or press the headset button on the desk phone, to get a dial tone. If there is no dial tone, double-check all cables have been correctly connected.

Q The person I am calling cannot hear me. Why?

A The clear dial tone or microphone volume settings might be incorrectly set. Read Section 3 and 4 of this manual.

Q Why am I getting a buzzing sound in my headset?

A Assuming the device has been set up correctly, the desk phone may not be fully immune to the radio signals the headset uses. To overcome this problem, move the headset base at least 30 cm away from the desk phone.

Q When I try to make a call on my desk phone, the GN1000 RHL lifts, but the call is not connected.

A Ensure the base is connected to the desk phone handset port, and not the desk phone headset port. The GN1000 should not be connected to the headset port.

Q Is it possible to automate calling and answering on my desk phone without using a handset lifter?

A Yes, if the desk phone has an electronic hookswitch feature. Check your supplier for compatibility with your phone, and/or consult the support section on www.jabra.com.

Q Why does my desk phone's electronic hookswitch not work with my headset?

A Please check your specific desk phone documentation for electronic hookswitch compatibility and configuration settings. Alternatively visit www.jabra.com.

Q What is the range on the Jabra PRO 920?

A Jabra PRO 920 supports a maximum range of up to 120 m (base to headset). Range varies according to the environment in which the headset is used.

Q Can I make a conference call using multiple headsets?

A Yes, the Jabra PRO 920 is able to pair with four headsets in total: one primary and three secondary headsets. Please see section 6.3 of this manual for more information.

Q Can I turn the headset off to save power when I'm away from the base?

A Yes. Press and hold the headset multi-function button on the headset for five seconds to power the headset off. To power the headset back on, dock the headset with the base, or tap the multi-function button.

Q What is the talk time for a Jabra PRO 920 headset?

A Up to 8 hours talk time.

Q My headband/earhook/neckband is broken. How do I purchase another one?

A Contact your local Jabra supplier.

9. TECHNICAL SPECIFICATIONS

9.1 JABRA PRO 920 HEADSET

Operating environment:

0°C to +40°C; Up to 95% RH non-condensing.

Call control:

Multi-function button support for answer call, end call, reject call, docking operations also answer and end calls.

Volume control and microphone mute:

Button controls on headset.

Visual indicator:

LED indicates call status, pairing status and other events.

Audio indicators:

Tones indicate incoming calls, low battery, volume level, microphone muting and other events.

Sound quality:

DSP noise reduction; echo cancellation; tone control; narrowband audio.

Recharge:

While docked in the Jabra PRO 920 base.

Wireless standard:

(CAT - iq) European DECT and U.S. DECT.

DECT range:

For European DECT; up to 120 meters from Jabra PRO 920 base to headset.

For U.S. DECT; up to 350 feet from Jabra PRO 920 base to headset.

DECT frequencies:

US DECT: 1.92 - 1.93 GHz.

EU DECT: 1.88 - 1.90 GHz.

Wearing-styles:

Headband, and earhook (earhook not supplied in all regions). Neckband is available as an accessory.

Microphone boom arm style:

Midi.

Speaker(s):

Wideband speaker.

Microphone:

Noise-cancelling microphone.

9.2 HEADSET BATTERY

Battery type:

Lithium Ion-polymer.

Battery capacity:

295 mA/h, typical.

Battery talk time:

Up to 8 hours.

Battery lifetime:

Minimum 1000 charge cycles.

Battery standby time:

At least 36 hours.

Operating temperature range:

-20°C to +60°C.

Note: The headset features a temperature-dependant charging algorithm that prevents the battery from being charged during extreme temperatures (below 0° and above 45°C).

Battery charge time:

20% charge in less than 20 minutes.

50% charge in less than 45 minutes.

Full charge in less than 3 hours.

Battery shelf life:

Headset battery holds charge for 6 months in the off state, before recharge is required.

9.3 MATERIALS AND ALLERGIES

The headband attachment is made of stainless steel and does not have a nickel-coated surface. Nickel release from the headband is 0.02 µg/cm²/week, which is below the 0.50 µg/cm²/week limit established by EU Directive 94/27/EF. The stainless steel alloy was tested for nickel release in accordance with the European standard EN 1811:1998.

Other wearing-style attachments are made of plastic and contain no known allergens. The ear cushions do not contain vinyl. The products contain no nickel, chrome or natural rubber that can come into contact with users' skin.

9.4 JABRA PRO 920 BASE

The Jabra PRO 920 base meets the following specifications.

Dimensions:

118 mm x 76 mm x 29 mm.

Wireless standard:

(CAT - iq) European DECT and U.S. DECT.

Operating environment:

-0°C to +40°C; Up to 95% RH non-condensing.

Recharge cradle:

Fits supplied Jabra PRO 900 series headset.

Desk Phone connections:

RJ-9 for handset, RJ-9 for phone body (or headset port), RJ-45 for AUX (for Jabra Link or GN1000 handset lifter).

Clear Dial Tone switch and microphone volume switch:

Electromechanical switches. Clear dial tone switch and microphone volume level set manually.

Electronic hookswitch standards:

GN1000, Jabra IQ, DHSG and MSH, and other Jabra DHSG adapters. Each EHS requires additional cabling and/or equipment available separately. GN1000 is supported by default and requires no additional configuration.

9.5 PRODUCT DISPOSAL

Please dispose of the headset according to local regulations and recycle when possible. Do not dispose as household waste. Do not dispose of the headset in a fire as the battery may explode. Batteries may also explode if damaged.

9.6 CERTIFICATIONS AND SAFETY APPROVALS

CE

This product is CE marked according to the provisions of the R & TTE Directive (99/5/EC). Hereby, GN declares that this product is in compliance with the essential requirements and other relevant provisions of Directive 1999/5/EC. For further information, please consult <http://www.jabra.com>.

Within the EU, this device is intended for use in Austria, Belgium, Cyprus, Czech Republic, Denmark, Estonia, Finland, France, Germany, Greece, Hungary, Ireland, Italy, Latvia, Lithuania, Luxembourg, Malta, Poland, Portugal, Slovakia, Slovenia, Spain, Sweden, The Netherlands, United Kingdom, and within EFTA in Iceland, Norway and Switzerland.

FCC

This device complies with part 15 of the FCC Rules. Operation is subject to the following two conditions: (1) This device may not cause harmful interference, and (2) this device must accept any interference received, including interference that may cause undesired operation.

Users are not permitted to make changes or modify the device in any way. Changes or modifications not expressly approved by Jabra will void the user's authority to operate the equipment.

This equipment has been tested and found to comply with the limits for a Class B digital device, pursuant to part 15 of the FCC Rules. These limits are designed to provide reasonable protection against harmful interference in a residential installation. This equipment generates, uses and can radiate radio frequency energy and, if not installed and used in accordance with the instructions, may cause harmful interference to radio communications. However, there is no guarantee that interference will not occur in a particular installation. If this equipment does cause harmful interference to radio or television reception, which can be determined by turning the equipment off and on, the user is encouraged to try to correct the interference by one or more of the following measures:

- Reorient or relocate the receiving antenna.
- Increase the separation between the equipment and receiver.
- Connect the equipment into an outlet on a circuit different from that to which the receiver is connected.
- Consult the dealer or an experienced radio/TV technician for help.

The user must place the base 8" (20 cm) or more from any personnel in order to comply with FCC RF exposure requirements.

Industry Canada

Operation is subject to the following two conditions: (1) This device may not cause interference and (2) This device must accept any interference, including interference that may cause undesired operation of the device. The term "IC:" before the certification/registration number only signifies that registration was performed based on a Declaration of Conformity indicating that Industry Canada technical specifications were met. It does not imply that Industry Canada approved the equipment.

Patents and design registration pending international

© 2015 GN Audio A/S. All rights reserved. Jabra® is a trademark of GN Audio A/S. All other trademarks included herein are the property of their respective owners. (Design and specifications subject to change without notice).

Made in China
MODEL: WHB003



Declaration of Conformity can be found on
www.jabra.com/CP/US/declarations-of-conformity